

Animal Parade



Finished Size: 63" x 69"



20955 A 2 yds



20956 A 1 3/4 yds



21010 R 3/4 yd



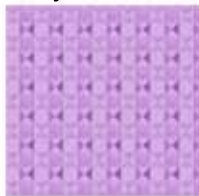
21010 B 5/8 yd



21010 G 3/8 yd.



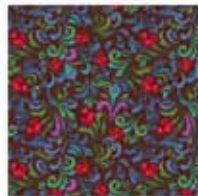
20961 B 1/2 yd



20961 L 1/8 yd



20958 E 3/8 yd



20960 A 1 yd



20959 R 5/8 yd



20957 A 4 yds (backing)

Animal Parade Quilt

Size: 63" x 69"

Quilt designed by Aileen Sansone

Skill level – Advanced Beginner

Cutting:

20955-A Fussy cut twelve rectangles $6\frac{1}{2}$ " x $8\frac{1}{2}$ ". Each rectangle should contain a picture. You can use chickens and pigs as in the photo or select your own assortment of animals.

21010-R Cut nine strips $2\frac{1}{2}$ " by width of fabric. Sub cut a total of 54 - $2\frac{1}{2}$ " x $2\frac{1}{2}$ " squares from four of the strips. Cut eight $3\frac{3}{4}$ " x $3\frac{3}{4}$ " squares.

21010-B Cut seven strips $2\frac{1}{2}$ " by width of fabric. Sub cut a total of 108 - $2\frac{1}{2}$ " x $2\frac{1}{2}$ " squares.

21010-G Cut four strips $2\frac{1}{2}$ " by width of fabric. Sub cut a total of 54 - $2\frac{1}{2}$ " x $2\frac{1}{2}$ " squares.

20961-B Cut ten squares $2\frac{3}{4}$ " x $2\frac{3}{4}$ ".

20961-L Cut ten squares $2\frac{3}{4}$ " x $2\frac{3}{4}$ ".

20958-E Cut five strips $1\frac{1}{2}$ " by width of fabric.

20960-A Cut one strip $12\frac{1}{2}$ " by width of fabric. Sub cut into fifteen $2\frac{3}{4}$ " x $12\frac{1}{2}$ " rectangles. Cut one strip $10\frac{1}{2}$ " by width of fabric. Cut into fifteen $2\frac{3}{4}$ " x $10\frac{1}{2}$ " rectangles. Cut one additional $2\frac{3}{4}$ " x $10\frac{1}{2}$ " rectangle. Cut eight $3\frac{3}{4}$ " x $3\frac{3}{4}$ " squares.

20959-R Cut seven strips $2\frac{1}{2}$ " by width of fabric.

20956-B Fussy cut and piece two strips 6" x $51\frac{1}{2}$ " and two strips 6" x $57\frac{3}{4}$ ".

20957-A Piece quilt back from yardage.

Construction:

Sew with $\frac{1}{4}$ " seam allowance and all fabrics right sides together. Press each seam toward the darker fabric as you sew.

Center of Quilt

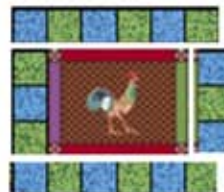
1. Sew twelve strips of six alternating 21010-R and 21010-B $2\frac{1}{2}$ " squares. Sew six strips of three $2\frac{1}{2}$ " squares in the order: 21010-R, 21010-B, 21010-R. Sew six strips of three squares in the order: 21010-B, 21010-R, 21010-B.

2. Sew twelve strips of six alternating 21010-G and 21010-B $2\frac{1}{2}$ " squares. Sew six strips of three $2\frac{1}{2}$ " squares in the order: 21010-G, 21010-B, 21010-G. Sew six strips of three squares in the order: 21010-B, 21010-G, 21010-B.

3. Sew the strips of three squares to the sides of the animal pictures and the strips of six squares to the top and bottom of the animal pictures as shown in the diagrams below. Each assembled block should measure $10\frac{1}{2}$ " x $12\frac{1}{2}$ ".



Block 1 (make six)



Block 2 (make 6)

4. Arrange assembled blocks into four rows of three blocks each. Sew blocks into rows, sewing $2\frac{3}{4}$ " x $10\frac{1}{2}$ " rectangles at ends of rows and between blocks.

5. Assemble sashing strips by sewing three $2\frac{3}{4}$ " x $12\frac{1}{2}$ " rectangles together at narrow ends with 20961-B and 20961-L $2\frac{3}{4}$ " x $2\frac{3}{4}$ " squares at ends and alternating between the rectangles (five sashing strips total).

6. Referring to the photo, sew sashing strips between rows of blocks, alternating the locations of the 20961-B and 20961-L $2\frac{3}{4}$ " x $2\frac{3}{4}$ " squares.

Quilt center should measure $45\frac{1}{2}$ " x $51\frac{3}{4}$ ".

Borders:

1. Sew ends of 20958-E $1\frac{1}{2}$ " strips together diagonally. Cut assembled strip into two strips $51\frac{3}{4}$ " long and two strips $47\frac{1}{2}$ " long. Sew the $51\frac{3}{4}$ " strips to the sides of the quilt center and the $47\frac{1}{2}$ " strips to the top and bottom. Quilt should now measure $47\frac{1}{2}$ " x $53\frac{3}{4}$ ".

2. Sew ends of remaining five 21010-R $2\frac{1}{2}$ " strips together diagonally. Cut assembled strip into two strips $53\frac{3}{4}$ " long and two strips $51\frac{1}{2}$ " long. Sew the $53\frac{3}{4}$ " strips to the sides of the quilt center and the $51\frac{1}{2}$ " strips to the top and bottom. Quilt should now measure $51\frac{1}{2}$ " x $57\frac{3}{4}$ ".

2. Assemble four patch blocks from 20960-A and 21010-R $3\frac{3}{4}$ " x $3\frac{3}{4}$ " squares. Sew 20956-B 6" x $57\frac{3}{4}$ " strips to sides of quilt. Sew four patch blocks to ends of remaining 20956-B strips. Sew strips to top and bottom of quilt.

Layer and quilt as desired.

Binding:

Sew ends of 20959-R strips together diagonally. Fold assembled strip in half lengthwise and press. Sew binding to right side of quilt, mitering corners. Turn binding to the back of the quilt and slipstitch in place.

While all possible care has been taken to assure the accuracy of this pattern, we are not responsible for printing errors or the way in which an individual work varies